

Windridge Neighborhood News



November, 2022

Answers to Your Homeowner Questions

The Home Owners Association Office gets many questions about how to deal with everyday issues around the community. Here are the guidelines for who to go to for different services

* **Emergencies, such as flooding, broken water mains, storm damage, snow emergencies:**

Call the HOA office(317-251-7861) or the emergency number after hours(317-698-6435)

* **Power Outages, Internet service breaks, land line phone outages, trash pickup:** Call the service provider like ATT, Spectrum, AES, Republic Trash, etc.

* **Strange or unusual activity, criminal activity, uninvited solicitors:** Call 911

* **Contractors like plumbers, electricians, deck repairs, etc.:** Call a qualified and licensed independent contractor. The HOA office does not recommend or maintain a list, so ask your neighbors, friends, and/or websites like “Angi”, “Nextdoor”, etc.

The HOA owners website can help you deal with questions:

By going to the Windridge website (www.windridgecondos.com) and clicking the Owners tab (you need the password, which you can get from the office, or an informed neighbor), you will find a variety of selections such as:

A) Do I need approval for replacing/staining or painting my deck, changing my landscaping, lighting or something structural?

B) What condos are for sale in Windridge?

C) Rules & Regulations

D) Board Business

E) Forms & Requests and much, much more. If the website does not provide the information you need, the Management Office will be happy to assist you.

DNR Warns Indiana Residents of Invasive Species

The Department of Natural Resources has asked Indiana residents to be on the lookout for two invasive species that have currently been sighted in the state.

The Spotted Lanternfly is native to China, India, Vietnam, North Korea, and Japan. The first US sighting of this unwanted visitor was in 2014, and the insect now seems to be making its way across the country. Don't be fooled by the apparent beauty of the insect as the Lanternfly poses serious dangers for orchard, grape and logging industries. The Tree of Heaven appears to be a preferred host tree. DNR suggests if you spot the Lanternfly, you kill it immediately. Look for evidence of egg laying in sheltered locations or in crevices on trees or outdoor objects. You may report any sightings to DEPP@dnr.IN.gov.

While most of us associate *Kudzu* with our southern states, this invasive vine has recently been spotted in Indiana, and the Department of Natural Resources is trying to eradicate it as quickly as possible. Known as the vine that "ate the south," the plant was originally brought to the United States from Japan to help with soil erosion. However, residents quickly learned the vine could grow as quickly as a foot a day, and just as quickly could take over shrubs, plants, and open areas. Kudzu poses a serious risk to native vegetation and the forest ecosystem. The leaf of the vine resembles a bean leaf. A single leaf is composed of three smaller leaflets, and the young plants are often hairy. To report a Kudzu site, contact kcote@dnr.in.gov

Dates to Remember

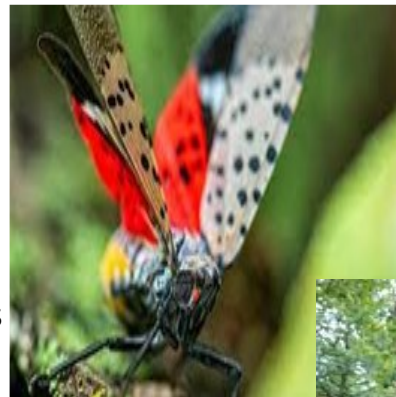
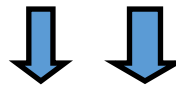
Windridge Co-Owners Assoc. Meetings

- * **November 9:** Town Hall Meeting for Budget Review, Fatima Retreat Center, 6:30pm
- **December 10,** Annual Meeting, Laurel Hall, 1:00pm

Mix & Mingle

- **November 4:** 5419 Green Willow Road Francie Weber, 5:30-7:30pm
- * **December 2:** 5392 Thicket Hill Lane, Craig & Lee Doyle, 5:30-7:30pm

Spotted Lanternfly



Spotted Lanternfly

Eggs

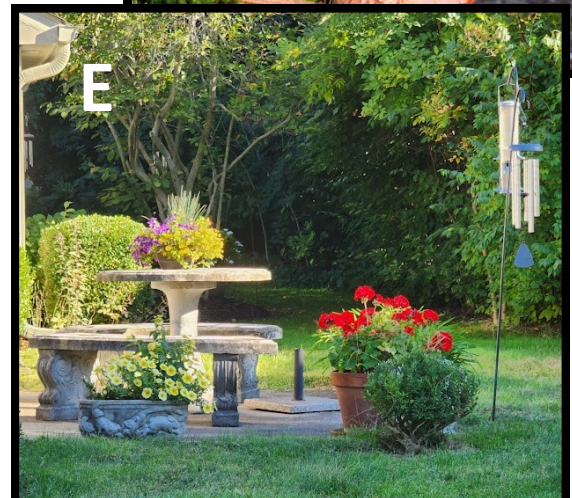
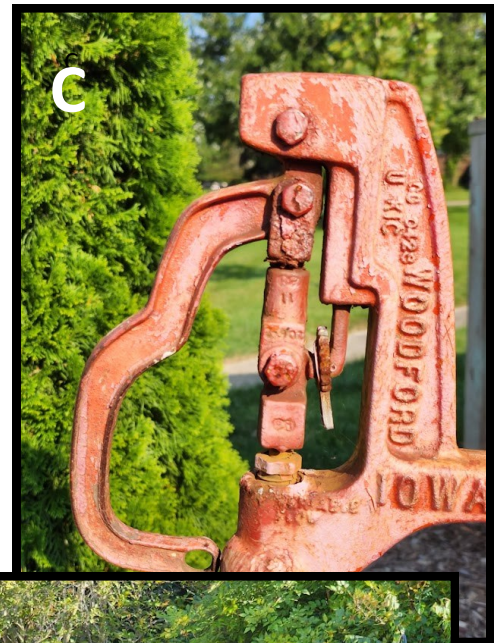
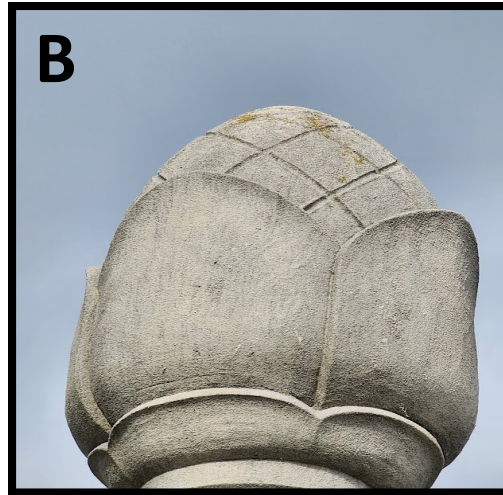
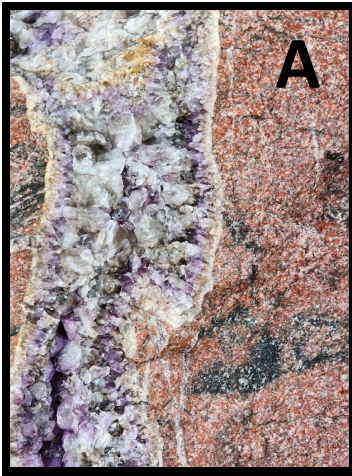


Kudzu Leaves



Where In Windridge? (Identify all 8, win a prize)

All pictures are visible from Windridge Streets



Newsletter Team



Stephanie Denson **Maribeth Ransel** **Mary Ellen Stahl** **Keith Stahl**

We need contributors. Anyone interested in contributing to the newsletter may contact us at:

Sdwdenson@gmail.com

Marjoeransel@live.com

Maryellenstahl@bellsouth.net

Keithstahl@bellsouth.net

Concert in Windridge Park

It was a perfect evening for a concert on September 17, when bluegrass band Touch of 'Grass entertained about 40 neighbors. They played all kinds of music, from The Kingston Trio to Pure Prairie League and Chuck Barry. It was a great evening of music and neighborhood connection.



From “The Board of Directors”

- Remember, your board are “volunteers” giving their time and experience to make Windridge a better place to live. New members will be voted in at the annual meeting in December. Give them your support as they carry out their responsibilities.
- Recently, the Board completed a review of the HOA guiding documents. The **Rules and Regulations** received a significant update. Please use the new version available on the HOA website or in hard copy at the office, or soon in your tube.
- Note -The official version of all guiding Windridge HOA documents are on the public and Owners portions of our website: www.windridgecondos.com. Remember, to access the Owners portion of the website, get the password from a neighbor or the office.

Clubs

Scrabble: Anyone interested should call Carol Frohlich at 317-840-5071.

Other Clubs: If you want to enlist new members or publish news in future newsletters, contact one of the Newsletter Team.